

Shaping Tomorrow

ADAPT IMPACT REPORT

 Taighde Éireann
Research Ireland



Engaging Content
Engaging People



**Empowering People
Fostering Innovation
Driving Economic Growth**

“ADAPT has consistently demonstrated the far-reaching impact of its research, from advancing scientific breakthroughs to driving economic growth and delivering tangible societal benefits. With over €1.1 billion in economic impact and a strong focus on building a highly skilled workforce, ADAPT is setting the standard for how AI research should be conducted—through meaningful collaboration and engagement with communities and industries alike.

As a leader in engaged research, ADAPT ensures that AI not only addresses the challenges of today but also shapes a future that benefits all of society. This report underscores the importance of investing in research initiatives of this ambition and scope, made possible through vital government funding. ADAPT’s success lies in the collective expertise of its interdisciplinary teams, who bring their knowledge to bear on complex problems and innovate at the very edges of their disciplines to deliver ground-breaking solutions.”

*Ed Brophy,
Chair of ADAPT’s Governance Board*

Foreword	01
At a Glance	02
Fuelling Economic Growth	04
Transforming Industry	05
Pioneering Scientific Excellence	08
Creating Jobs and Building Talent	10
Building AI Literacy	12
Societal Impact	12
Conclusion	17

Foreword



In under a decade, ADAPT has realised its ambitious vision to become a cornerstone of Ireland’s innovation ecosystem, driving economic growth, advancing scientific excellence, and improving society. This impact report chronicles ADAPT’s journey, highlighting research, partnerships, and lasting contributions.

Our work has positioned Ireland as a global leader in AI-driven digital content technology, while also preparing for future challenges. Success is measured not only in economic terms but also in the positive and lasting impact we have made on communities, industries, and society.

As we stand at the threshold of a new era, society finds itself at an inflection point. Rapid technological advances present unprecedented opportunities, but they also bring profound ethical and social challenges that risk deepening divides if not managed responsibly. AI has the potential to revolutionise every field of human endeavour from scientific research and innovation, ethics and societal impact, healthcare, climate and environment, education, business and the economy, creativity and the arts.

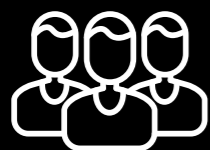
Funded first by Science Foundation Ireland and now by Taighde Éireann - Research Ireland, ADAPT has rapidly evolved since 2015 to become a leading hub of innovation in Ireland, transforming the digital landscape and achieving a cumulative economic impact of over €1.1 billion. However, our true success lies in the lasting impact on communities and society. Guided by a commitment to diversity, ethics, and collaboration, our research continues to push technological boundaries.

This report highlights our milestones, the projects shaping the future, and the profound societal impact of our work. But while it is important to reflect on our past achievements, we recognise that this is only the start. ADAPT’s mission is to collaborate with diverse stakeholders from civil society, government, academia and industry to shape a future that reflects Ireland’s values of equality, progress, and cultural heritage.

As we look ahead, we are more committed than ever to ensuring that technological advancements benefit everyone. By making forward-looking choices today about how AI evolves and is regulated, we can shape a future where AI-driven innovation empowers society and aligns with our deepest values.

Prof. John D Kelleher, ADAPT Director

At a Glance



+508,000
citizens

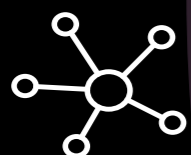
engaged through initiatives



ADAPT has supported the creation of

1039

new research jobs in Ireland



+67,000
citizens

educated through #DiscussAI

€177
million

in competitive research funding
secured



€1.1 billion
economic impact for Ireland

Commercialised academic research
through

77 licence
agreements

with companies in both Ireland and
internationally

337
alumni

advancing careers globally



+6,700
industry
professionals
upskilled

through seminars and meetups

+265
partner
organisations
across
38 countries

23,822 delegates

hosted at 64 international conferences in Ireland generating

€38 million

in economic activity through delegate spending for the Irish
economy



Over
2,587
scientific
papers
published



+105
competitively
won EU research
awards
securing over
€50 million

304 highly skilled
professionals employed by ADAPT



22 spinouts

creating

144

jobs and securing over
€340 million through
multinational acquisitions
and investments



Fuelling Economic Growth

Since 2015, ADAPT has driven substantial economic growth in Ireland, generating over €1.1 billion in economic value through strategic research and innovation. By securing €42.4 million in core funding from the Irish Government through Science Foundation Ireland, and now by Taighde Éireann - Research Ireland, ADAPT has successfully achieved a 27.5 fold return on Government funding. This impressive return showcases ADAPT's ability to turn public investment into lasting economic and social benefits.

ADAPT's influence extends beyond direct investment. Through the creation of 22 spinout companies, ADAPT has generated over 144 jobs, significantly boosting Ireland's tech ecosystem. These spinouts are at the forefront of fields such as immersive learning, digital mental health

support, and voice AI, demonstrating the Centre's role in nurturing high-potential startups. Since 2019, multinationals have either acquired or invested over €340 million in 12 ADAPT spinouts, highlighting the global demand for the cutting-edge technologies developed at the Centre. By fostering a vibrant ecosystem of entrepreneurship and commercialisation, ADAPT is helping to position Ireland as a leader in the global technology landscape while contributing to the success of the national economy.

Through 77 technology licence agreements, representing 10% of all licences from Research Performing Organisations (RPOs) in Ireland between 2015 and 2022, ADAPT has successfully translated academic research into commercial products and services.

ECONOMIC IMPACT

Over
€219 million
in funding with an
economic impact of over €1.1 billion for the Irish economy

STARTUPS

22
ADAPT spinout companies.
Ten multinationals acquired or invested €340 million in 12 ADAPT spinouts since 2019.

PARTNERS

Over
265
partners from 38 countries.
ADAPT has created over 77 licence agreements representing 10% of all licences emanating from Research Performing Organisations (RPOs) in Ireland

FOREIGN DIRECT INVESTMENT

19
new AI R&D teams established in Ireland by major multinational partners of ADAPT, creating over 600 new research jobs and investing over €172 million in Ireland

TALENT ATTRACTION

586
highly skilled professionals employed as a result of ADAPT's activities

Transforming Industry

ADAPT has become a trusted research partner for industry seeking cutting-edge research and innovation. Since 2015, the Centre has engaged with over 70 industry partners across 32 countries, pioneering innovations in fields such as AI ethics, digital governance, and connected health. These partnerships have enabled ADAPT to address digital challenges and ensure that technology serves both business and citizens.

ADAPT's collaborations with

international partners have also been instrumental in shaping global conversations around ethical AI. The Centre's researchers are at the forefront of AI governance, contributing to standards and policy frameworks that aim to ensure AI is used responsibly and for the benefit of society.

One key area where ADAPT has played a significant role is in attracting Foreign Direct Investment (FDI) to Ireland. While not the sole driver, ADAPT's world-class research

in AI-driven digital content technology, coupled with its strong industry partnerships, has significantly contributed to the establishment of 19 AI R&D teams in Ireland by multinational companies, creating almost 600 new jobs and generating €172 million in investment. The confidence these multinationals place in Ireland's innovation ecosystem highlights the country's reputation as a global hub for AI research and technological advancement.



"The unique approach to fostering innovation and commercialisation at ADAPT was instrumental in the success of Iconic Translation Machines Ltd. ADAPT's cutting-edge research in Machine Translation, together with funding and support from multiple national and European agencies, created an environment where breakthrough technologies could be rapidly developed and brought to market. The acquisition of Iconic by RWS Group, a UK-based multinational, is a testament to the global demand for best-in-class technologies and innovations and highlights the critical role that research organisations play in underpinning Ireland's economic and technological leadership."

Dr Paraic Sheridan, Co-Founder & Chairman of Iconic Translation Machines Ltd.

Tackling Misinformation and Disinformation

Mis/disinformation and other forms of toxic content pose significant challenges to modern society, from public health risks to the destabilisation of democratic institutions. ADAPT researchers are creating systems to face these challenges, drawing on their expertise in AI, media literacy, and behavioural science.

ADAPT activities focus on:

- Public engagement programmes and educational initiatives to help people of all ages navigate today's complex information landscape with confidence.
- Pioneering the use of AI to limit the spread of mis/disinformation and other forms of toxic content including foreign information manipulation and interference (FIMI) among vulnerable and susceptible communities.
- Collaborating with policymakers, law enforcement agencies, Chief Security Officers (CSOs) and industry leaders, to develop policy, institutional knowledge and scalable technical solutions to help combat the spread of mis/disinformation.



Precision ALS: Advancing Personalised Medicine for a Rare Neurological Disease

Precision ALS (P-ALS) is a pioneering pan-European initiative aimed at tackling Amyotrophic Lateral Sclerosis (ALS), a rare and fatal neurodegenerative disease. Currently, treatments for ALS focus on symptom management and improving quality of life, as there is no known cure or definitive treatment. P-ALS is establishing the first Precision Medicine approach to ALS research.

The project has created a central European Patient Data Platform, compiling high-quality clinical and scientific data to accelerate the discovery of potential biomarkers and new pathways for treatment. Global industry leaders such as Biogen, Novartis, and IQVIA are key partners in this initiative, contributing expertise in pharmaceuticals and data science to enhance the research. The platform will integrate novel data from biomarkers, DNA profiles, and epigenetic factors, offering unprecedented insights into the disease.

By connecting patients across Europe and using cutting-edge technology, Precision ALS is making significant strides toward understanding ALS and transforming treatment possibilities for this devastating disease.

Applied Research: From dLab to Industry

The Design and Innovation Lab (dLab) at ADAPT is a catalyst for transforming cutting-edge research into tangible, real-world applications. With a dynamic team of postdoctoral researchers, designers, research engineers, and programme managers, dLab uniquely bridges the gap between academic innovation and industry demands. Leveraging Agile methodologies, dLab excels in converting research insights into practical, proof-of-concept solutions that directly address the complex challenges businesses face today.

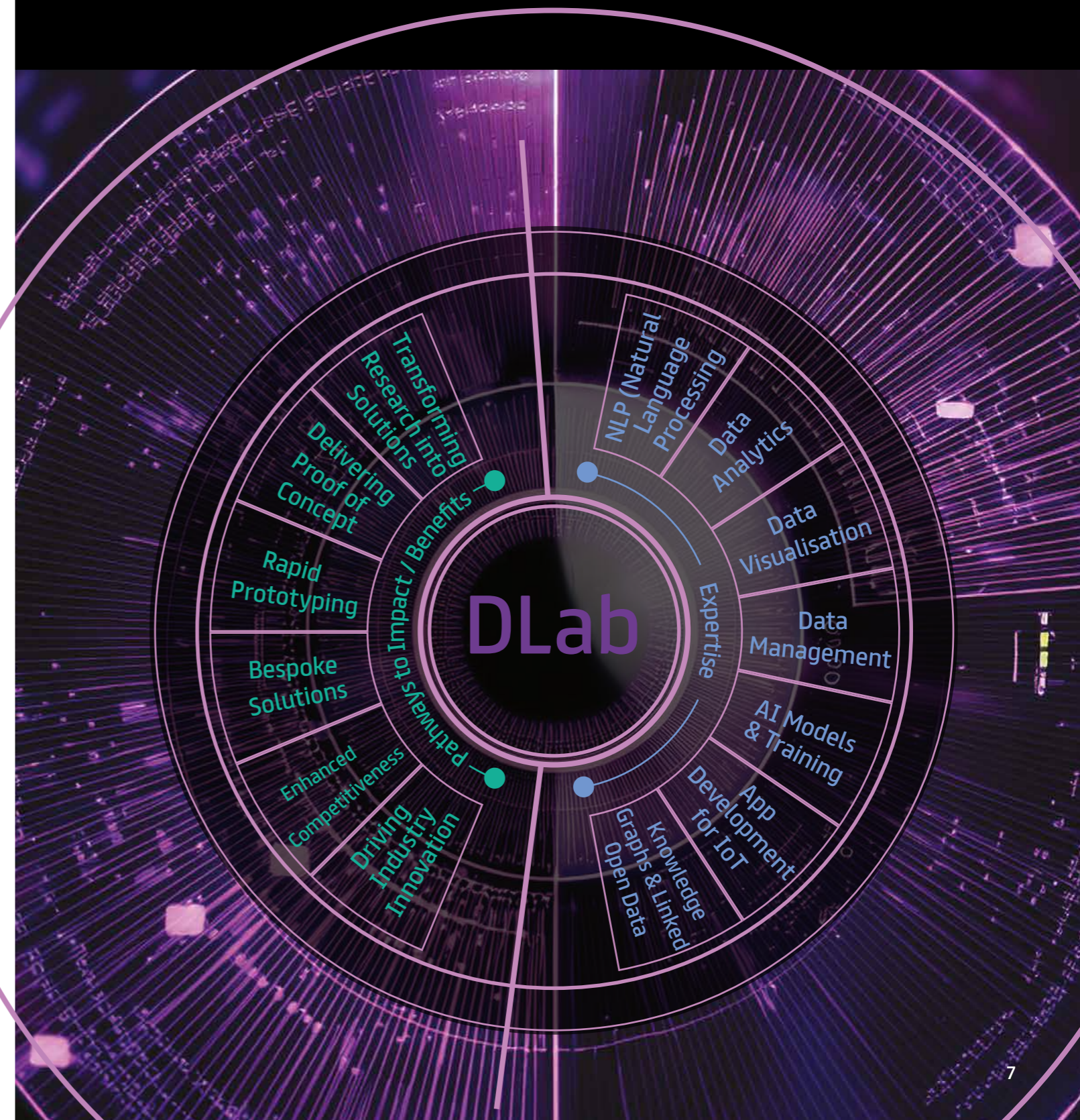
Provenance

€2.4 million Horizon 2020 project aimed at tackling the issue of 'fake news' by tracking and flagging online disinformation, especially through social media.



€4 million Horizon Europe project aimed at curbing the spread of disinformation and combating its negative effects such as promoting hate speech, human trafficking, and bogus medical cures.

ATHENA €3.1 million Horizon Europe project protecting the democratic process by empowering the EU and its citizens to detect, analyse, and counter foreign information manipulation and interference (FIMI).



Pioneering Scientific Excellence

ADAPT's scientific excellence is evident in the prolific research output of its members. Since 2015, ADAPT researchers have published over 2,587 peer-reviewed papers, contributing significantly to global knowledge. Over 60 of these papers have received prestigious awards for best paper or presentations, cementing ADAPT's reputation as a leader in interdisciplinary research.

ADAPT's influence is global, with researchers collaborating with over 265 partners in 38 countries. These collaborations have enabled ADAPT to lead and collaborate on major international projects

that address complex challenges for society, from personalised medicine to digital inclusion.

ADAPT's commitment to scientific excellence is also clear from its leadership in hosting high-profile international conferences. Between 2015 and 2023, ADAPT hosted 64 international conferences, drawing over 23,822 delegates from around the world to Ireland and generating €38 million for the local economy. These events not only provided a platform for cutting-edge discussions but also positioned Ireland as a thought leader in AI and digital content innovation.

AI for Sustainability and Sustainable AI

As the world becomes more interconnected and reliant on digital technologies, the role of AI in addressing global challenges such as climate change and social inequality has become increasingly important. At ADAPT, we recognise that while AI is a powerful tool for advancing sustainability, its development must also be sustainable.

AI for sustainability directly addresses environmental challenges. ADAPT researchers are developing AI solutions that contribute to the United Nations' Sustainable Development Goals (SDGs), helping industries and societies transition towards greener, more sustainable practices. However, AI development can have significant environmental costs. Large scale models require a significant amount of computational power, leading to high energy consumption and increased carbon emissions. ADAPT's research in Sustainable AI aims to minimise these environmental impacts by enhancing efficiency in AI training models.

By focussing on both AI for Sustainability and making AI itself more sustainable, ADAPT is ensuring that AI becomes a key part of tackling today's environmental challenges. Our goal is to harness the power of AI in a way that not only addresses immediate issues but also protects the future of our planet for generations to come.

High-Impact Education: The European Master in Law, Data and Artificial Intelligence (EMILDAI)

ADAPT's commitment to cutting-edge education is exemplified by the European Masters in Law, Data, and AI (EMILDAI) at DCU, the first course of its kind in Europe. EMILDAI equips future leaders in both law and technology with the tools they need to navigate the increasingly complex world of AI regulation and data governance, while ensuring that ethical standards remain at the forefront of AI development.

EMILDAI is global in scope with 81 students hailing from 34 countries across four continents. This groundbreaking programme reinforces ADAPT's role as a pioneer in high-impact education, while also strengthening Europe's leadership in ethical AI governance.

"This is a perfect example of the impact research and innovation can have. By supporting and harnessing these types of advanced research projects we will ultimately see the benefits across society." (1st March 2022)

Taoiseach Simon Harris, speaking as Minister for Further and Higher Education, Research, Innovation, and Science, about the work of ADAPT's research programme.

RESEARCH
+2,587

Peer reviewed articles

since January 2015 with over 60 of these papers earning prestigious best paper or presentation awards

TALENT CREATION
+337

graduate students and postdoctoral researchers trained by ADAPT up to January 2024

GLOBAL REPUTATION
64

international conferences, drawing over 23,922 delegates from around the world to Ireland, generating €38 million for the Irish economy

LEADERS

21 Principal Investigators and

143 scientific leaders across 8 Irish universities

ADAPT has grown its multidisciplinary faculty, creating a thriving community of research leaders

AWARDS
6

Prestigious ERC Awards won by ADAPT academics along with over 100 competitively won EU projects worth + €50 million

Spotlight on ADAPT research funded by European Research Council grants

HABIT

This project uses the Neureka smartphone app to investigate habit formation by tracking brain changes, aiming to improve good habits, reduce harmful ones, and address compulsive disorders like addiction and OCD.

NovelEco

A citizen science project that engages the public in studying urban wild spaces and species, generating data to better understand societal attitudes towards these overlooked ecosystems.

PaCE (Patterns of Conflict Emergence)

This project uses machine learning to identify patterns and forecast conflicts using diverse data sources, including financial markets, news, diplomacy, and satellite imagery.

VOICES

A five-year ERC-funded project that uses advanced digital and AI technologies to recover and analyse the voices and lived experiences of non-elite women in early modern Ireland.

FoodCult

A five-year project combining history, archaeology, science, and IT to explore the diet and foodways of early modern Irish communities.

TiNT

A project using advanced digital tools to analyse New Testament manuscripts, exploring how their titles reflect historical interpretations by the communities that produced them.

Creating Jobs and Building Talent

ADAPT's contribution to talent development is a key marker of impact. Since its establishment, ADAPT has trained over 337 highly skilled professionals, representing 39 nationalities, many of whom have gone on to make significant contributions to both academia, industry, and government. Over 76% of ADAPT's alumni have remained in Ireland, playing a key role in strengthening Ireland's innovation ecosystem and positioning the country as a global leader in technology and research.

ADAPT alumni hold leadership positions in major technology companies such as Apple, Microsoft, and LinkedIn, where they are at the forefront of developing next-generation technologies. Almost half of ADAPT's alumni have pursued successful

academic careers, contributing to ground-breaking research in AI, data governance, and digital ethics at leading universities worldwide. Their experiences within ADAPT's multidisciplinary research environment have equipped them with the tools to address complex technical and social challenges and drive innovation across a range of sectors.

ADAPT's global reach has attracted top international talent to Ireland, fostering a diverse and dynamic research community. Researchers from 54 countries contribute to ADAPT's research programme, creating a vibrant environment where global perspectives drive cutting-edge research. ADAPT employs over 300 highly skilled professionals who support ADAPT's research activities and operations.

ALUMNI

337
Alumni from
39

40%
Moved to Industry

49%
Moved to academia

76%
of alumni stayed in
Ireland helping to build
Ireland's innovation
ecosystem

ADAPT has recruited
researchers from
54
countries across the globe
highlighting the international
appeal

Industry Alumnus

"At ADAPT, I had the incredible opportunity to work alongside some of the brightest minds in AI and digital content technology. I was supported through my early career as a postdoc and research fellow and that laid the foundation for my career. The skills I developed and the networks I built during this period have been invaluable, opening doors to new opportunities and helping me advance to my current position. In particular, the opportunity to work with industry, from major, established international companies to brand-new startups, was an essential experience that I could not have obtained elsewhere.

Beyond professional growth, ADAPT's supportive environment and culture of collaboration were instrumental in shaping who I am today. Creativity and innovation was encouraged, with a focus on ethical development and integrity at the core of all activities. I can confidently say that my time at ADAPT equipped me with the tools I needed to succeed and make a difference in the tech industry."

Dr Alexander O'Connor, Director of Machine Learning, Autodesk.

Academic Alumnus

"The ADAPT Centre has truly shaped my journey, both personally and professionally. As a postdoctoral researcher first and later as an assistant professor at ADAPT, at DCU, I had unprecedented opportunities to work on interesting, challenging topics with global high-tech giants, to lead teams and receive funding to continue ground-breaking research. But my experience in the Centre was not just about the cutting-edge research in AI and Natural Language Processing—it was the mentorship, the inspiration, and the sense of community that kickstarted my career as an academic. ADAPT helped me develop my potential and to pursue the work I'm passionate about. The opportunities I had there and the network I established, played a vital role in guiding me to where I am today, as an Assistant Professor at Tilburg University, doing research I love. ADAPT not only help me become a better researcher—it helped me become the person and leader I am today."

*Dimitar Shterionov
Assistant Professor
Tilburg University*



Building AI Literacy

In today's rapid evolving technological landscape, ADAPT's educational programmes are empowering citizens with the knowledge and skills needed to thrive in the digital age. Through its "AI in My Life" workshop series, ADAPT has enhanced AI literacy for over 3,000 secondary school students, providing them with the tools to critically assess AI technologies. These workshops are also inspiring a new generation to explore careers in STEM fields, helping to ensure that Ireland remains a leader in the global digital economy.

At primary school level, ADAPT's "Technology in My Life" programme has engaged more than 1,500

students, encouraging them to think critically about the role technology plays in their daily lives. By fostering a deep understanding of technology from a young age, these programmes help children and teenagers make informed decisions in an increasingly digital world.

In partnership with the Department of Education, ADAPT has also delivered professional development opportunities for teachers, equipping them to teach digital content and AI technologies. This collaboration ensures that future generations are well prepared to face the challenges and opportunities presented by the digital era.

Societal Impact

Public engagement is a pillar of ADAPT's mission. Through its award-winning Education and Public Engagement (EPE) programme, ADAPT has connected with over 508,000 members of the public. Initiatives such as ADAPT's Citizens' Think-Ins help build a greater understanding of AI and its influence on our everyday lives.

One standout initiative is ADAPT's #DiscussAI campaign, which has engaged more than 67,000 people in conversations about the ethical challenges of AI and its potential for positive social impact. Since its launch in September 2021, #DiscussAI has reached a wide range of communities across Ireland, with over 150 ADAPT researchers leading discussions that examine AI's role in everyday life while generating ideas for future research.

Central to #DiscussAI is collaboration with educators, community leaders, and civil society organisations, ensuring that events and content are relevant and accessible to diverse audiences. The campaign has helped create a collaborative research environment in Ireland, making research that is more attuned to public concerns and more responsive to society's needs.

Beyond its role in making research more inclusive, #DiscussAI has also shaped national AI policy. The campaign was recognised in the August 2023 Progress Report on the implementation of Ireland's national AI strategy, 'AI-Here for Good', and ADAPT was invited to showcase #DiscussAI at the National Youth Assembly on AI, whose recommendations were presented to the Irish Government.

CONNECTIONS MADE THROUGH ADAPT'S EDUCATION AND PUBLIC ENGAGEMENT (EPE) PROGRAMME

+508,000 members of the public reached representing 32 counties in an all-Ireland programme of activities

#DiscussAI

campaign has enhanced the AI literacy of more than 67,000 people in Ireland and helped inform national policy on AI in Ireland

AILO (All Ireland Linguistics Olympiad) is Ireland's longest running linguistic problem solving competition and has welcomed

+44,000 participants to date

A national leader in engaged research with

over 26,000 citizen scientists

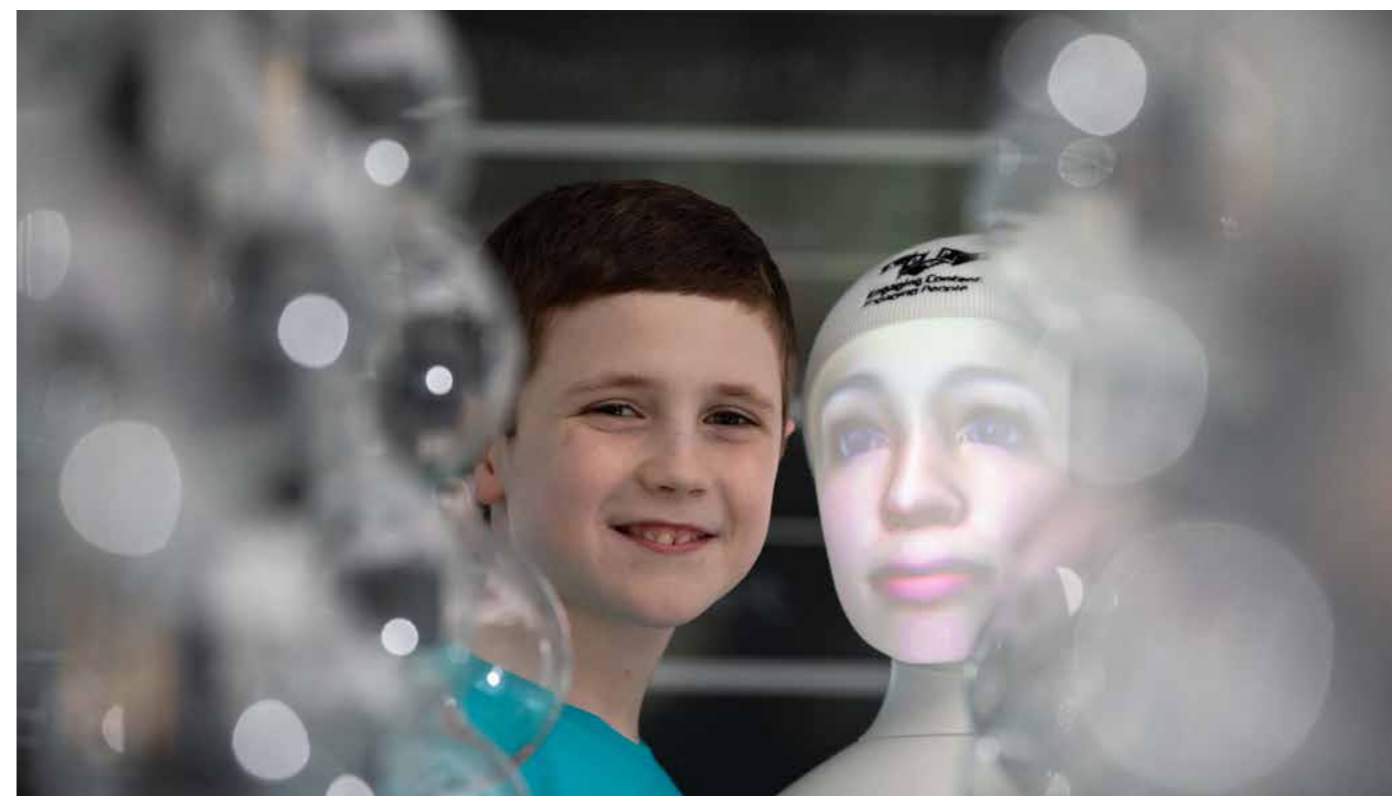
contributing to research projects

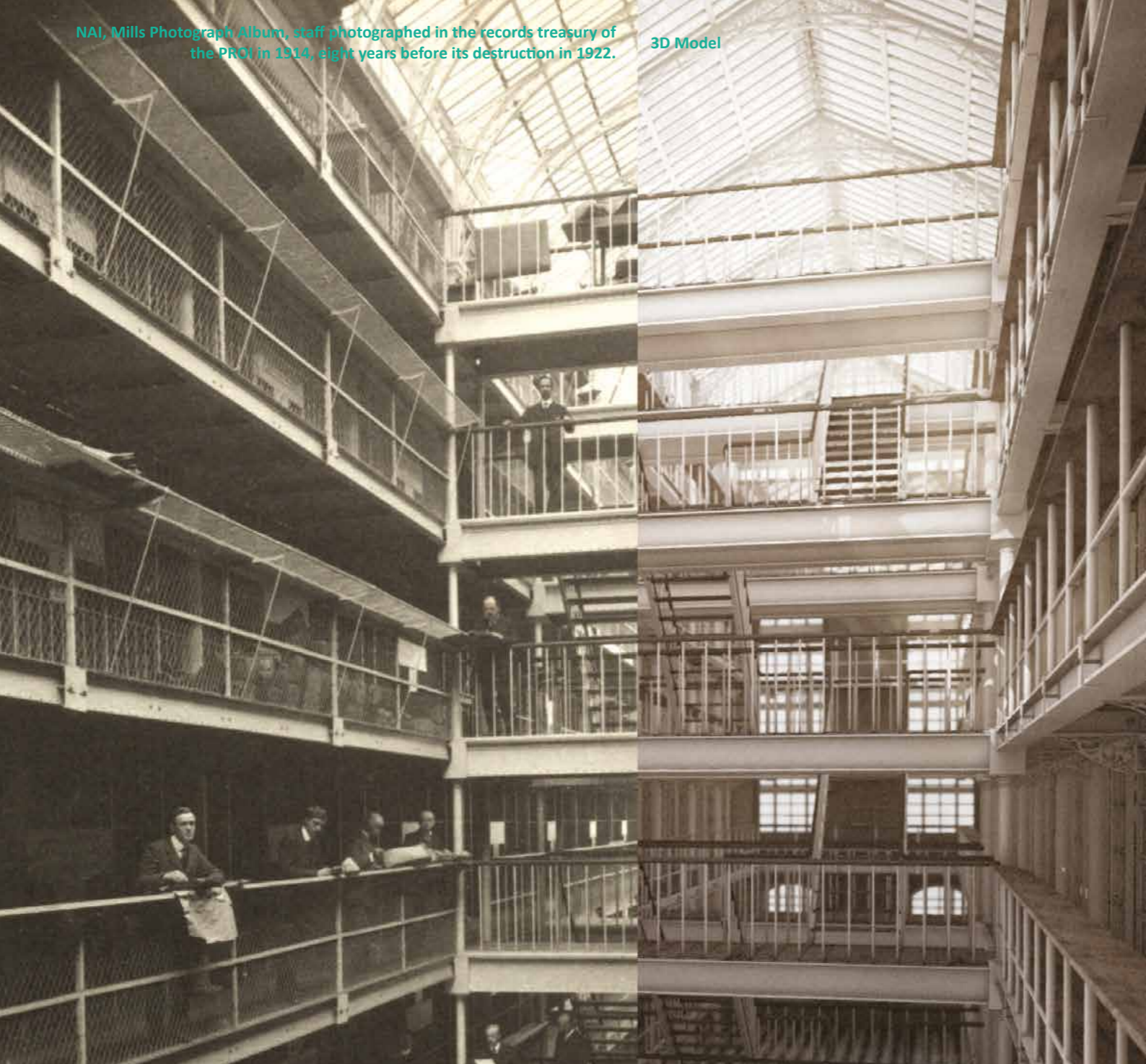
€1.5m of competitive funding won from seven national and international funders for EPE work since 2021 with work presented at international conferences and workshops across Europe



Linguistic Problem Solvers

ADAPT's All Ireland Linguistics Olympiad (AILO), with over 44,000 participants from 350 secondary schools, is fostering the next generation of linguistic problem solvers, critical for Ireland's future innovation landscape. Supported by the Department of Tourism, Culture, Arts, Gaeltacht, Sport and Media, one in five schools on the island of Ireland participates in the Olympiad annually. The pipeline of talented linguistic problem solvers was further strengthened by ADAPT's introduction of Linguistics to the Irish secondary school curriculum for the first time in 2022 through its Transition Year Linguistics module. More than 3,500 students and 275 teachers have honed their knowledge of linguistics through the module to date.





Preserving the Irish Language in the Digital Age

Innovative Solutions to Safeguard a National Language

As the Irish language faces the challenges of digital extinction, ADAPT researchers have been leading a revolution to ensure its survival and evolution in the digital world. Through projects like GaelTech and eSTÓR, ADAPT is developing the next-generation of Irish language technologies. In 2021 alone, these initiatives secured over €350,000 in funding, contributing to essential advancements in natural language processing for Irish and supporting bilingual translation tools.

GaelTech is at the forefront of creating linguistic tools to enhance Irish-language processing, while

eSTÓR functions as a national repository for English/Irish bilingual data. This central resource has been pivotal in reducing translation costs while promoting the growth of translation technologies in Ireland. Furthermore, ADAPT's partnership with the Houses of the Oireachtas has empowered Irish translators with state-of-the-art tools, ensuring the language remains relevant and adaptable in the digital era.

Through these initiatives, ADAPT is not only preserving the language for future generations but also inspiring a new wave of Irish language technologists. By leveraging technology, ADAPT has transformed language preservation from a cultural responsibility into a forward-thinking innovation strategy.

Preserving Ireland's Cultural Heritage Through Innovation

ADAPT's commitment to cultural preservation is exemplified in projects like Beyond 2022, which digitally brought back to life seven centuries of Irish history lost in the 1922 destruction of the Four Courts. This pioneering effort has set a new global benchmark for digital archiving and has received multiple awards in recognition of its innovation. ADAPT's commitment to safeguarding Ireland's cultural heritage extends to its work in preserving the Irish language, with initiatives like GaelTech and eSTÓR playing a crucial role in ensuring that the richness of Ireland's linguistic heritage is passed on to future generations.

Beyond 2022 - The Virtual Record Treasury of Ireland

Preserving Ireland's History through Digital Innovation

On the 30th of June, 1922, at the beginning of the Irish Civil War, the Public Record Office in the Four Courts was destroyed, taking with it seven centuries of historical documents. What seemed like an irreparable loss has been brought back to life through ADAPT's groundbreaking Beyond 2022 project, which digitally created the Virtual Record Treasury of Ireland (VRTI). This initiative showcases ADAPT's leadership in using cutting-edge technology for cultural preservation. By

digitally restoring Ireland's lost historical records, Beyond 2022 has not only revived the nation's past but has also set new standards for global archival practices.

The project has gained widespread recognition for its innovative approach, securing €6.5 million in funding from the Department of Culture, Heritage, and the Gaeltacht under Project Ireland 2040. With five core partners, including The National Archives in Ireland and the UK, the Public Record Office of Northern Ireland, The Irish Manuscripts Commission, and Trinity College Dublin, Beyond 2022 has had a remarkable reach. The project's website has attracted 3.5 million visitors, and international media coverage has reached an

audience of over 34 million. The initiative has won multiple awards, including the Ellis Prize for Archive Theory and Practice and a Trinity College Dublin Innovation Award.

"The innovative technology behind the Knowledge Graph for Irish History underscores Ireland's reputation as a world-class leader in the field of technological innovation and cutting-edge research. The project's positive restoration of a critical loss of archival heritage will resonate with many other international experiences of cultural loss." (27th Jun 2022)

Taoiseach Micheál Martin at launch of the Virtual Record Treasury of Ireland



Beyond 2022 Founding Director Dr. Peter Crooks receiving a Trinity Innovation Award from Provost, Dr. Linda Doyle for his work on Beyond 2022 and the Virtual Record Treasury of Ireland.

A National Leader in Engaged Research

ADAPT is nationally and internationally recognised as a leader in engaged research, producing award-winning projects that are delivering significant societal impact. Many of these initiatives actively engage communities that have traditionally been underrepresented in STEM research. By integrating insights from these projects, ADAPT's researchers and EPE professionals have contributed to shaping international best practice in STEM outreach. Their work has been showcased at leading science communication and research management conferences around the world.



SignON: Bridging the Communication Gap for the Deaf and Hard of Hearing

The SignON project, led by ADAPT researchers at DCU, has made a significant impact by bridging the communication gap between Deaf, hard of hearing, and hearing individuals. Unlike past technologies, SignON adopted a community-driven approach, involving Deaf and hard of hearing individuals in every stage of development. This approach ensured that the project met the real needs of the communities it was designed to serve.

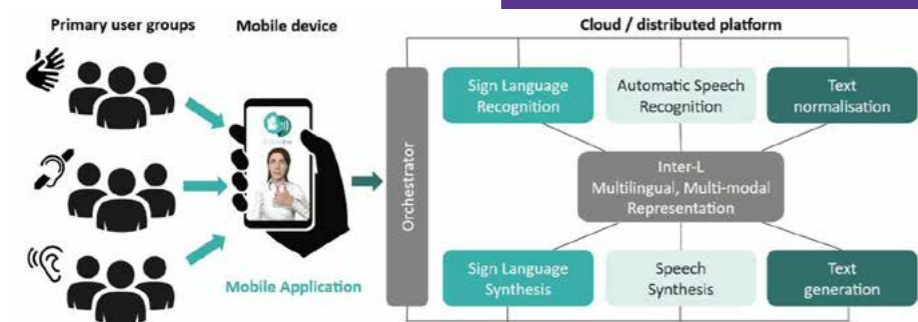
Funded by €5.6 million from the EU's Horizon 2020 programme, SignON developed a machine translation service that facilitates communication between sign languages and spoken languages. Over the course of three years, the project engaged 5,000 citizens and worked closely with Deaf communities to co-design and refine the platform, ensuring it was both effective and user-friendly.

The influence of SignON has extended beyond technology. The project contributed to shaping accessibility policies by presenting key recommendations to the European Parliament and the European Commission, driving

important discussions on inclusivity and accessibility. The project's success has been widely recognised, with the team winning the SFI Engaged Research Award 2023, the Most Innovative Transformation Award at the Digital Transformation Awards, and the Social Impact Award at the 2024 Analytics and AI Awards from the Analytics Institute of Ireland. These awards reflect ADAPT's commitment to pioneering inclusive, impactful innovations.

"SignON's co-creation process shows how collaboration between hearing researchers and Deaf communities can lead to innovative solutions and mutual understanding."

Frankie Picron, CEO, European Union of the Deaf



Conclusion

Technology is evolving faster than ever before. Our research aims to drive innovation while also creating a fairer, more equitable society.

The choices we make today will shape the world for generations to come. At ADAPT, we believe that those choices must push the boundaries of what's possible while elevating our shared humanity. Together, by harnessing diverse expertise and maintaining our commitment to ethical, human-centric research, we can build a future where technology advances progress for everyone. The better world we envision is within reach and it's up to us to make it a reality.



Trinity College Dublin
Coláiste na Tríonóide, Baile Átha Cliath
The University of Dublin



DCU
Ollscoil Chathair
Bhaile Átha Cliath
Dublin City University



MTU
Ollscoil Teicneolaíochta na Mumhan
Munster Technological University



Maynooth University
National University
of Ireland Maynooth



**OLLSCOIL NA
GAILLIMHE**
UNIVERSITY
OF GALWAY



TUS



University College Dublin
An Coláiste Ollscoile, Baile Átha Cliath
Ireland's Global University

ADAPT

Engaging Content
Engaging People

www.adaptcentre.ie

collaboration@adaptcentre.ie