



#DiscussAI

AI IN MY LIFE

A World  
Leading SFI  
Research  
Centre



# Taster Workshop

HOST INSTITUTION



**Trinity College Dublin**  
Coláiste na Tríonóide, Baile Átha Cliath  
The University of Dublin

HOST INSTITUTION



PARTNER INSTITUTIONS



University College Dublin  
An Coláiste Ollscoile, Baile Átha Cliath  
Ireland's Global University



**MTU**  
Ollscoil Teicneolaíochta na Mumhan  
Munster Technological University



**TUS**



**Maynooth University**  
National University  
of Ireland Maynooth



**UNIVERSITY OF GALWAY**

# What is AI in My Life?



## AI IN MY LIFE

- Workshop series on Artificial Intelligence
- Developed by ADAPT research centre and partners
- Designed to help students navigate the 'Age of AI'

### *Our Partners:*



This work is licensed under a [Creative Commons Attribution-NonCommercial-ShareAlike 4.0 International License](https://creativecommons.org/licenses/by-nc-sa/4.0/)



# What you'll learn today



## AI IN MY LIFE

- Learn about AI and how it's used
- Uncover some of the ethical and privacy implications of AI
- Evaluate the role of AI in your life and in society

### Our Partners:



This work is licensed under a [Creative Commons Attribution-NonCommercial-ShareAlike 4.0 International License](https://creativecommons.org/licenses/by-nc-sa/4.0/)



# *A few quick questions*

This work is licensed under a [Creative Commons Attribution-NonCommercial-ShareAlike 4.0 International License](https://creativecommons.org/licenses/by-nc-sa/4.0/)





Join at [menti.com](https://menti.com) | use code **86 74 86**

AI IN MY LIFE TASTER WORKSHOP

# 1. What words do you associate with artificial intelligence?

Waiting for responses ...



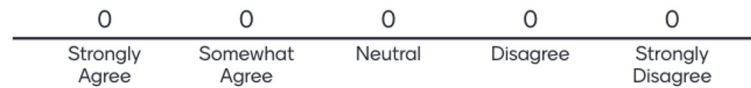
This work is licensed under a [Creative Commons Attribution-NonCommercial-ShareAlike 4.0 International License](https://creativecommons.org/licenses/by-nc-sa/4.0/)



Join at [menti.com](https://menti.com) | use code **86 74 86**

AI IN MY LIFE TASTER WORKSHOP

## 2. I understand what 'Artificial Intelligence' is

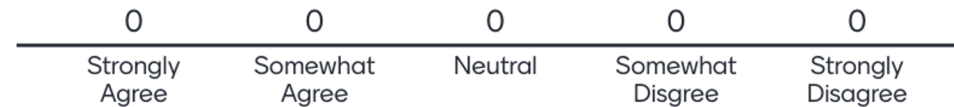


Join at [menti.com](https://menti.com) | use code **86 74 86**

 Mentimeter

AI IN MY LIFE TASTER WORKSHOP

### 3. I use Artificial intelligence in my daily life.

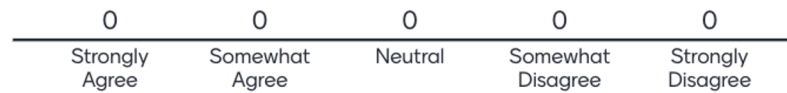


Join at [menti.com](https://menti.com) | use code **86 74 86**

 Mentimeter

AI IN MY LIFE TASTER WORKSHOP

# 4. I am interested in talking about artificial intelligence with other people.

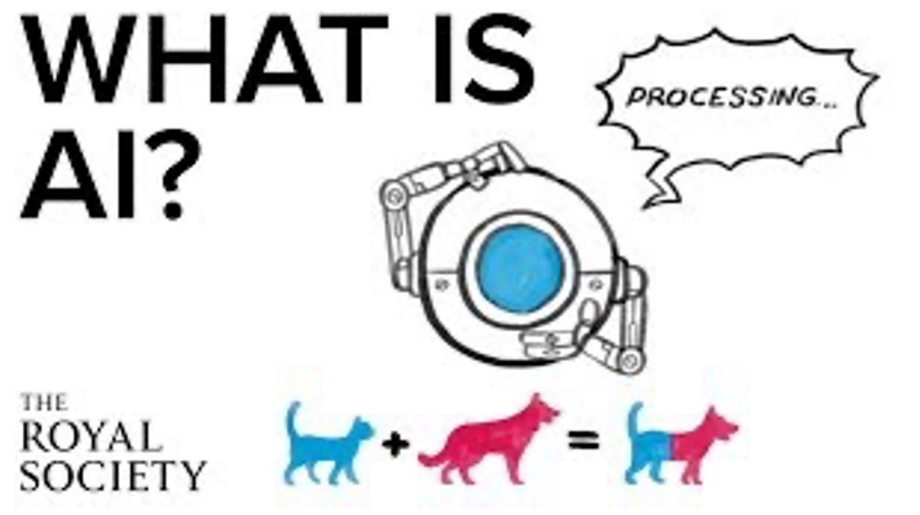


# What is AI?



Artificial intelligence refers to **many different technologies** that are designed to **accomplish tasks** that can **otherwise be only carried out by human minds**, for example identifying patterns, recognising images, understanding languages or solving problems.

# What is AI?



The Royal Society-  
[https://www.youtube.com/watch?v=nASDYRkbQIY&feature=emb\\_imp\\_woyt](https://www.youtube.com/watch?v=nASDYRkbQIY&feature=emb_imp_woyt)

This work is licensed under a [Creative Commons Attribution-NonCommercial-ShareAlike 4.0 International License](https://creativecommons.org/licenses/by-nc-sa/4.0/)



# Machine Learning



**MACHINE  
LEARNING**

ABILITY TO PERFORM TASKS  
WITHOUT EXPLICIT INSTRUCTIONS  
AND RELYING ON PATTERNS

*In the 1950s AI pioneer Arthur Samuel defined Machine Learning as “the field of study that gives computers the ability to learn without explicitly being programmed.”*

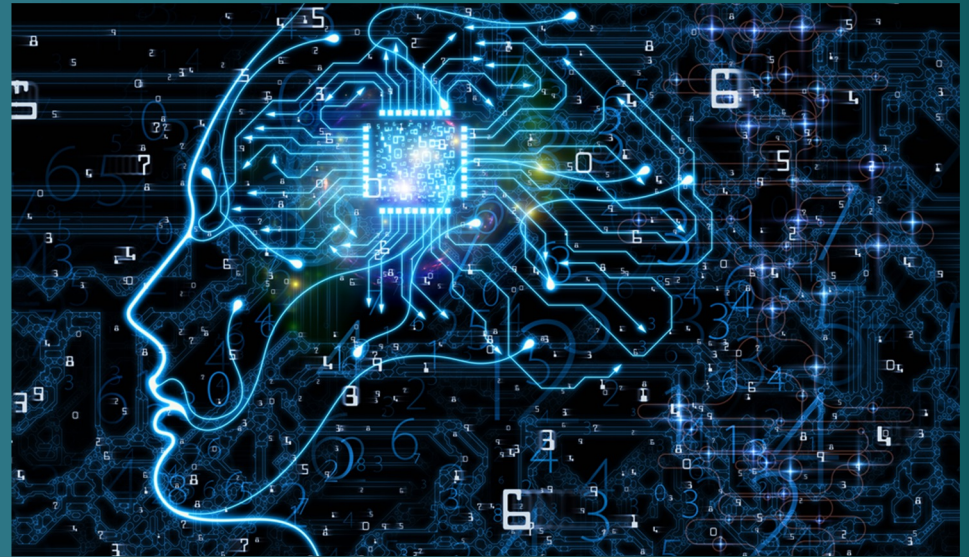
This work is licensed under a [Creative Commons Attribution-NonCommercial-ShareAlike 4.0 International License](https://creativecommons.org/licenses/by-nc-sa/4.0/)





# Machine Learning

*Where might we use machine learning in our daily lives?*



This work is licensed under a [Creative Commons Attribution-NonCommercial-ShareAlike 4.0 International License](https://creativecommons.org/licenses/by-nc-sa/4.0/)



# Machine Learning



[https://www.youtube.com/watch?v=f\\_uwKZIAeM0](https://www.youtube.com/watch?v=f_uwKZIAeM0)

This work is licensed under a [Creative Commons Attribution-NonCommercial-ShareAlike 4.0 International License](https://creativecommons.org/licenses/by-nc-sa/4.0/)



# Machine Learning Examples



*Take out your phones/tablets and go to:*  
<https://thing-translator.appspot.com/>

# Facial Recognition



## Plan to introduce facial recognition technology for use by gardaí

Updated / Wednesday, 25 May 2022 07:05



Facial recognition technology enables automated searches of CCTV footage

This work is licensed under a [Creative Commons Attribution-NonCommercial-ShareAlike 4.0 International License](https://creativecommons.org/licenses/by-nc-sa/4.0/)



# Emotion Detection



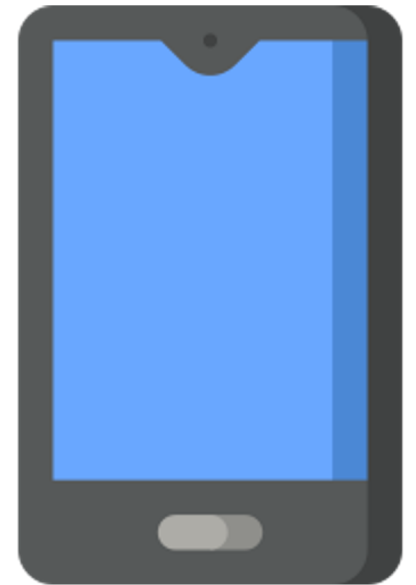
This work is licensed under a [Creative Commons Attribution-NonCommercial-ShareAlike 4.0 International License](https://creativecommons.org/licenses/by-nc-sa/4.0/)



# Emotion Detection

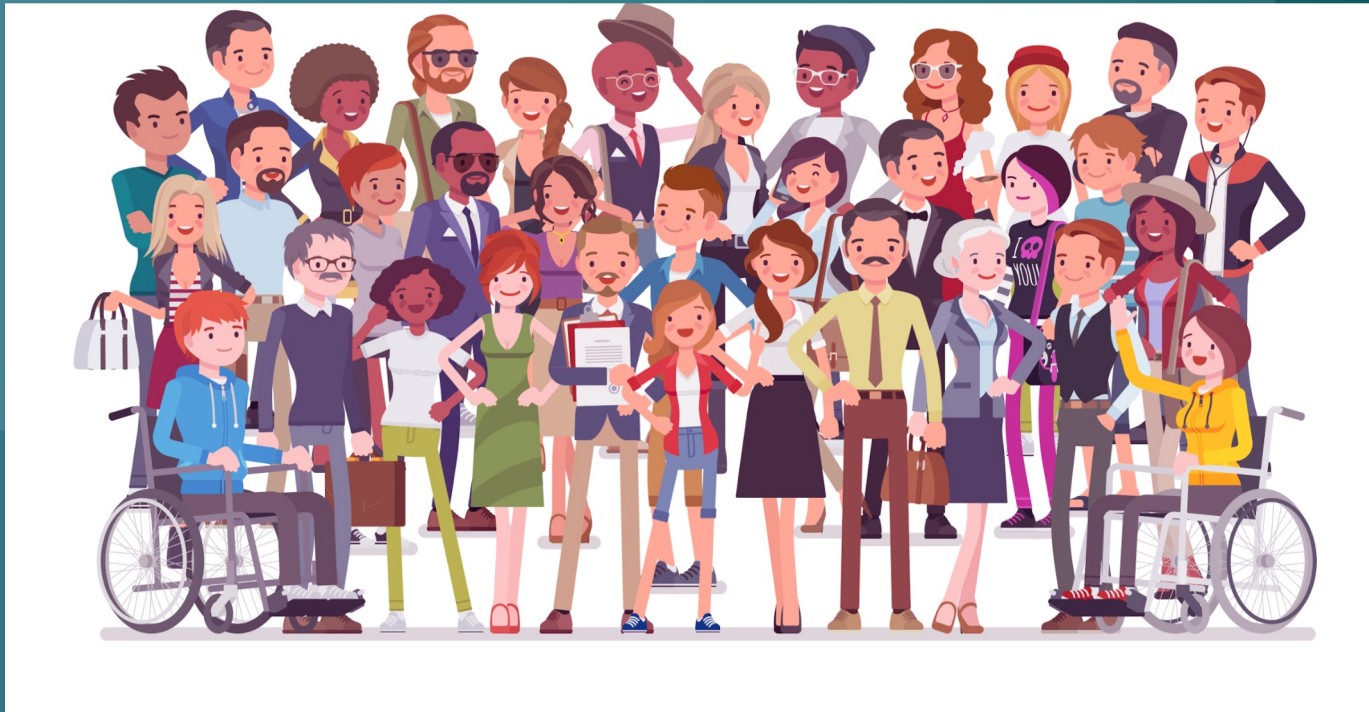
*Use the below link on your phone or laptop. Follow the instructions on the webpage.*

[Financial Times Emotion Detection](https://ig.ft.com/emotion-recognition/)  
<https://ig.ft.com/emotion-recognition/>





# Could AI be biased?



“We don't see things as they are, we see them as *we* are.”



# Does Bias really matter?



This work is licensed under a [Creative Commons Attribution-NonCommercial-ShareAlike 4.0 International License](https://creativecommons.org/licenses/by-nc-sa/4.0/)



# Is AI always used for good?



This work is licensed under a [Creative Commons Attribution-NonCommercial-ShareAlike 4.0 International License](https://creativecommons.org/licenses/by-nc-sa/4.0/)



# Is AI always used for good?



<https://www.youtube.com/watch?v=gLoI9hAX9dw>

This work is licensed under a [Creative Commons Attribution-NonCommercial-ShareAlike 4.0 International License](https://creativecommons.org/licenses/by-nc-sa/4.0/)

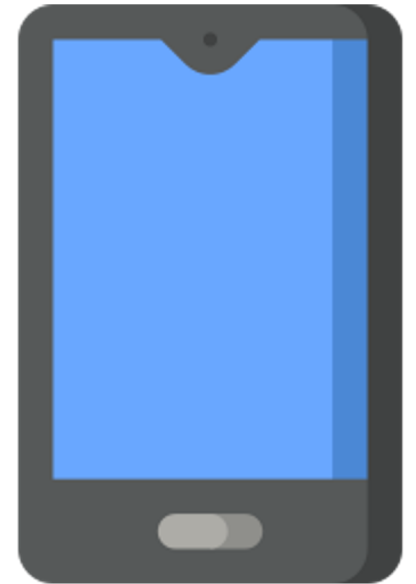


# Detecting Deepfakes

*How good are you at spotting a real image from an AI-generated fake?*

[Detect Fakes](https://detectfakes.media.mit.edu/)

<https://detectfakes.media.mit.edu/>



# Deepfakes

*Could Deepfakes be used for good?*

# What's your data worth?



This work is licensed under a [Creative Commons Attribution-NonCommercial-ShareAlike 4.0 International License](https://creativecommons.org/licenses/by-nc-sa/4.0/)



# Do you care about your data?



- Do you mind that Mark Zuckerberg knows your name?
- Do you mind that he can see your Insta/WhatsApp account (even though you didn't add him as a friend)?
- Do you mind that he knows your top 5 friends?
- Do you mind that he knows your top 5 posts?
- What about if he knows how you reacted to others' posts?
- What about your DMs?

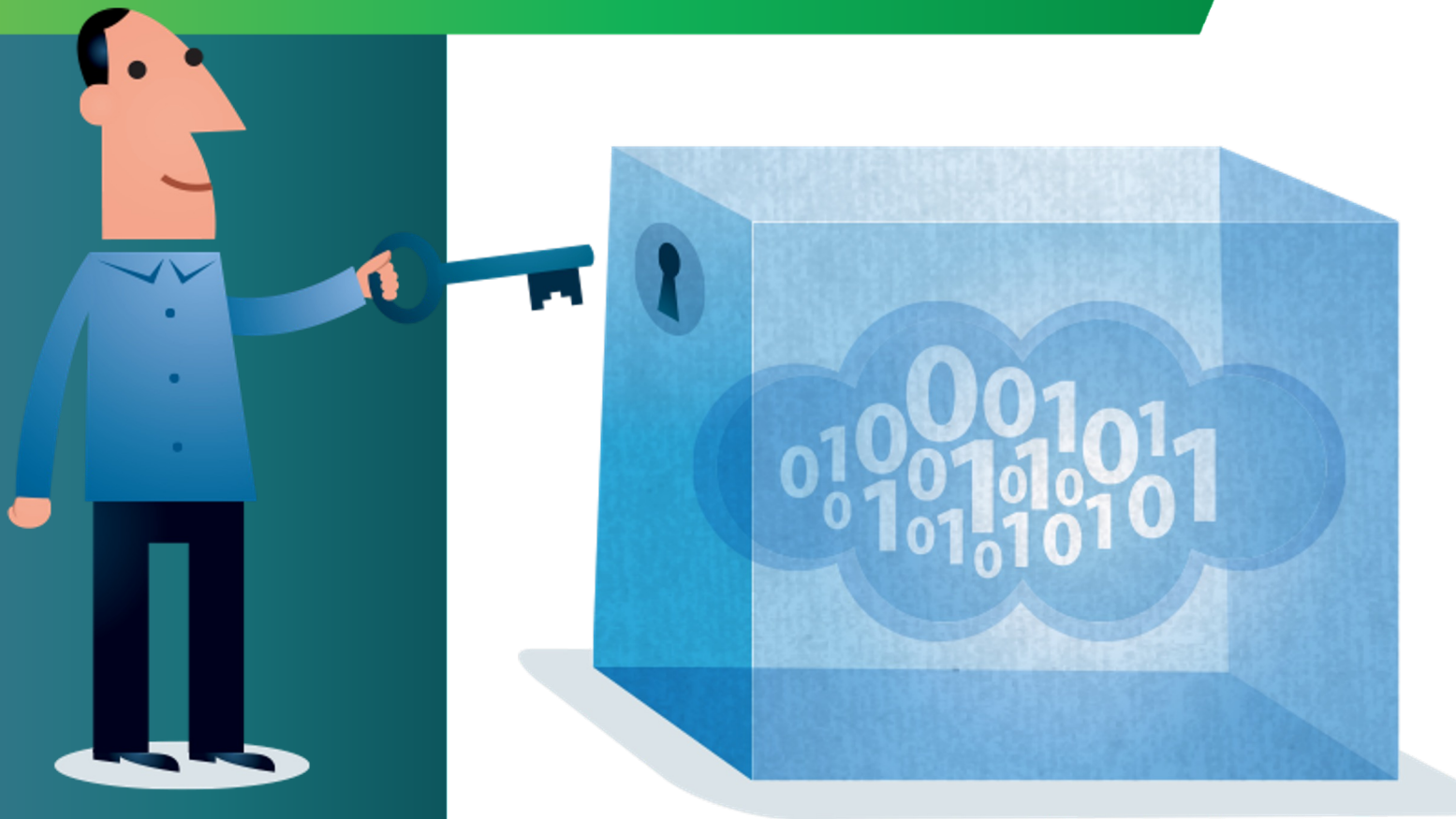


# Do you care about your data?



- Do you mind that **your teacher** knows your name?
- Do you mind that (s)he can see your Insta/WhatsApp account (even though you didn't add him as a friend)?
- Do you mind that (s)he knows your top 5 friends?
- Do you mind that (s)he knows your top 5 posts?
- What about if (s)he knows how you reacted to others' posts?
- What about your DMs?

# Protecting Your Data while using AI Tools

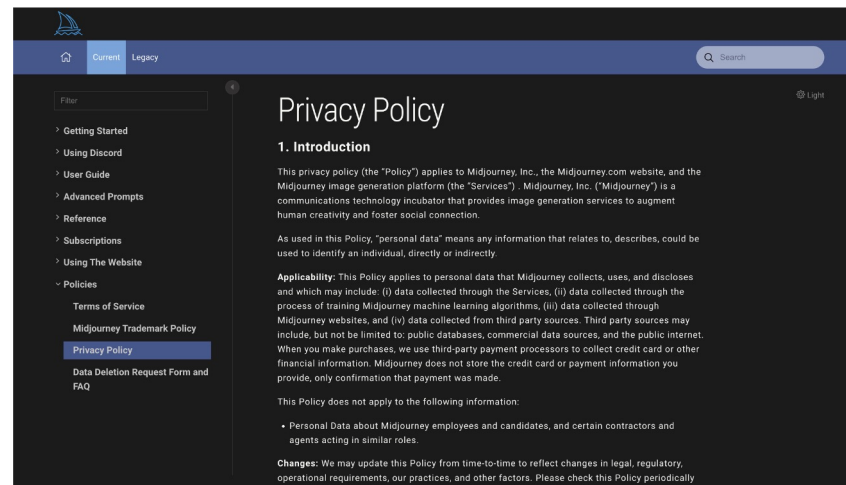


This work is licensed under a [Creative Commons Attribution-NonCommercial-ShareAlike 4.0 International License](https://creativecommons.org/licenses/by-nc-sa/4.0/)



# Protecting Your Data while using AI Tools

## 1. Always Check the Privacy Policy Before Use



Midjourney privacy policy:  
<https://docs.midjourney.com/docs/privacy-policy>

Tips adapted from:  
<https://www.wired.co.uk/article/how-to-use-ai-tools-protect-privacy>

This work is licensed under a [Creative Commons Attribution-NonCommercial-ShareAlike 4.0 International License](https://creativecommons.org/licenses/by-nc-sa/4.0/)



# Protecting Your Data while using AI Tools

## 2. Watch what you share

### ChatGPT

Tips for getting started

#### Ask away

ChatGPT can answer questions, help you learn, write code, brainstorm together, and much more.

#### Don't share sensitive info

Chat history may be reviewed or used to improve our services. Learn more about your choices in our [Help Center](#).

#### Check your facts

While we have safeguards, ChatGPT may give you inaccurate information. It's not intended to give advice.

Okay, let's go



**CHATGPT**

OpenAI privacy policy:

<https://openai.com/policies/privacy-policy>

Tips adapted from:  
<https://www.wired.co.uk/article/how-to-use-ai-tools-protect-privacy>

This work is licensed under a [Creative Commons Attribution-NonCommercial-ShareAlike 4.0 International License](https://creativecommons.org/licenses/by-nc-sa/4.0/)



# Protecting Your Data while using AI Tools

## 3. Change your settings

### What data is collected and how it's used

Google collects your Gemini Apps conversations, related product usage information, info about your location, and your feedback. Google uses this data, consistent with our [Privacy Policy](#), to provide, improve, and develop Google products and services and machine-learning technologies, including Google's enterprise products such as Google Cloud.

Gemini Apps Activity is on by default if you are 18 or older. Users under 18 can choose to turn it on.

If your [Gemini Apps Activity setting](#) is on, Google stores your [Gemini Apps activity](#) with your Google Account for up to 18 months. You can change this to 3 or 36 months in your [Gemini Apps Activity setting](#). Info about your location, including the general area from your device, IP address, or Home or Work addresses in your Google Account, is also stored with your Gemini Apps activity. Learn more at [g.co/privacypolicy/location](https://g.co/privacypolicy/location).

### How human reviewers improve Google AI

To help with quality and improve our products (such as generative machine-learning models that power Gemini Apps), human reviewers read, annotate, and process your Gemini Apps conversations. We take steps to protect your privacy as part of this process. This includes disconnecting your conversations with Gemini Apps from your Google Account before reviewers see or annotate them. **Please don't enter confidential information in your conversations or any data you wouldn't want a reviewer to see or Google to use to improve our products, services, and machine-learning technologies.**

### Configuring your settings

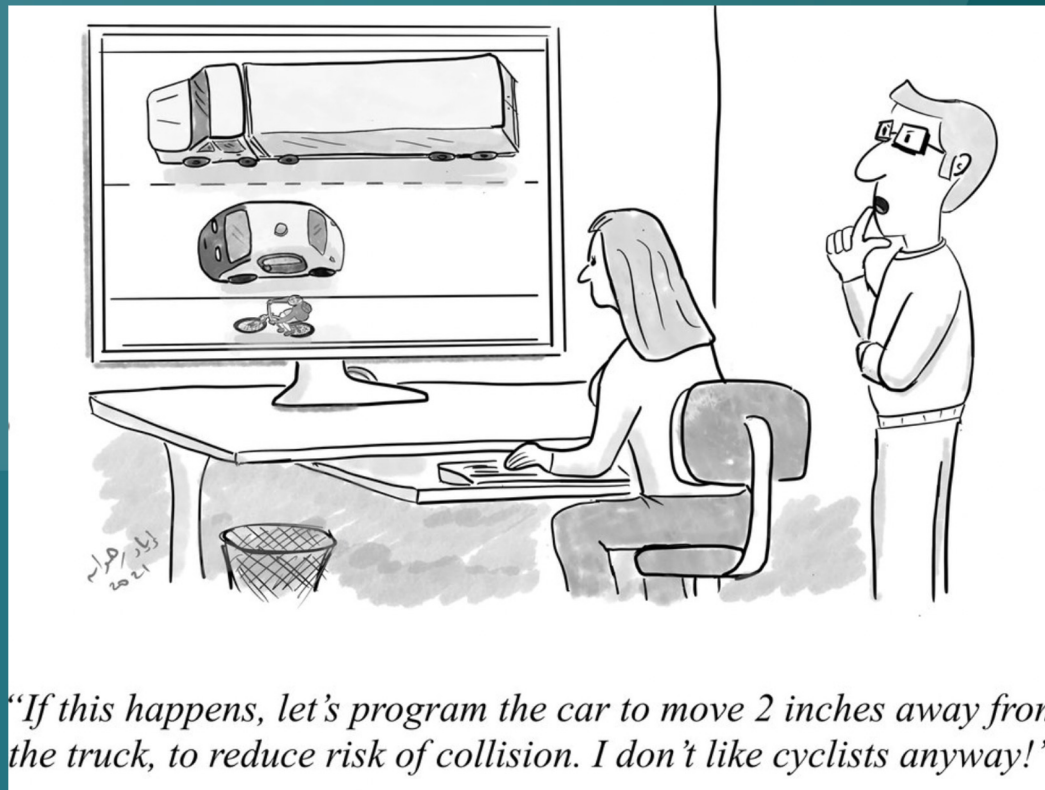
[Visit your Google Account](#) to access settings and tools that let you safeguard your data and protect your privacy.

Tips adapted from:  
<https://www.wired.co.uk/article/how-to-use-ai-tools-protect-privacy>



Google Privacy Policy:  
<https://policies.google.com/privacy>

# AI and Ethics

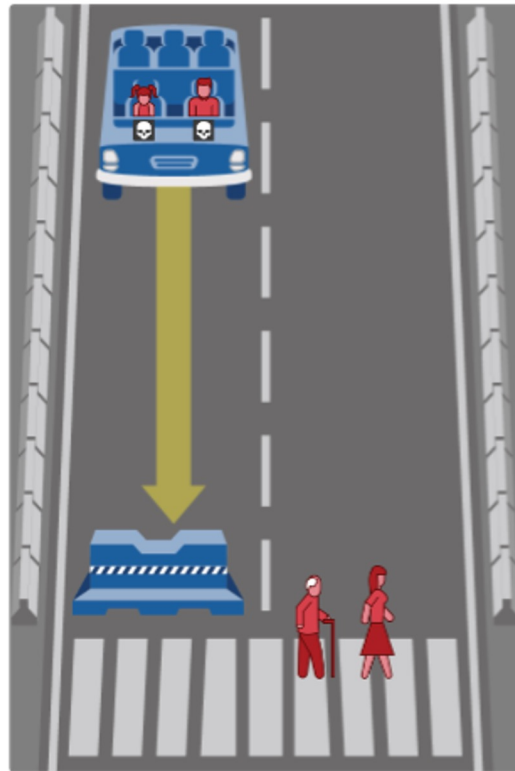


Source:  
<https://www.evilaicartoons.com>

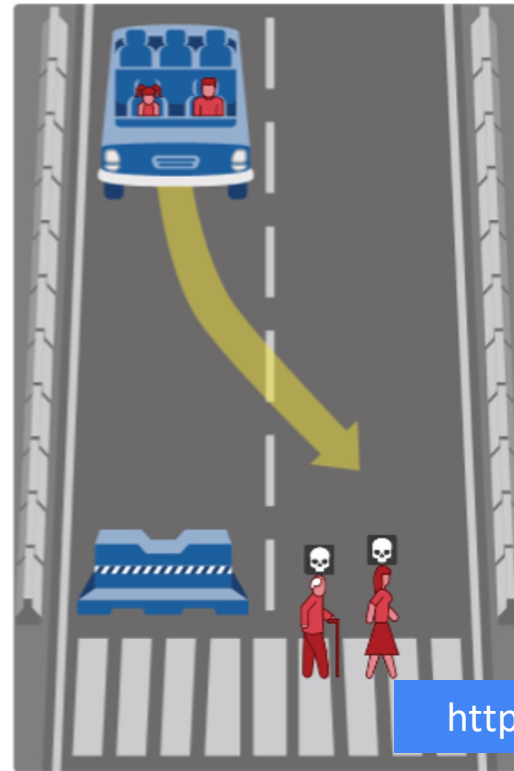
# Ethical Decisions of AI

What should the self-driving car do?

The self-driving car with sudden brake failure will continue ahead and crash into a barrier ***killing a middle aged man and his young daughter***



The self-driving car with sudden brake failure will continue ahead and crash into a barrier ***killing an elderly man and a middle aged woman***



<https://www.moralmachine.net>

This work is licensed under a [Creative Commons Attribution-NonCommercial-ShareAlike 4.0 International License](https://creativecommons.org/licenses/by-nc-sa/4.0/)





# The Key Message



# What have we learned?

AI is transforming our lives

The influence of AI is growing constantly

We need to balance the benefits with the drawbacks

You need to be ready for the 'Age of AI'

Join at [menti.com](https://menti.com) | use code **2710 8752**

AI IN MY LIFE TASTER WORKSHOP

# 1. What words do you associate with artificial intelligence?

Waiting for responses ...



This work is licensed under a [Creative Commons Attribution-NonCommercial-ShareAlike 4.0 International License](https://creativecommons.org/licenses/by-nc-sa/4.0/)

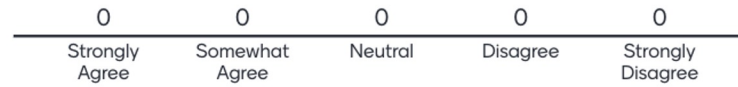


Join at [menti.com](https://menti.com) | use code **2710 8752**



AI IN MY LIFE TASTER WORKSHOP

## 2. I understand what 'Artificial Intelligence' is



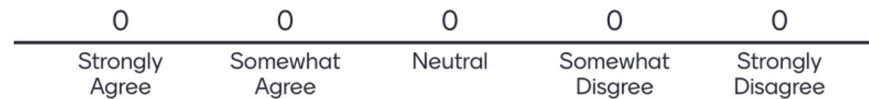
Join at [menti.com](https://menti.com) | use code **2710 8752**

Mentimeter

AI IN MY LIFE TASTER WORKSHOP

### 3. I use Artificial Intelligence in my daily life.

*Please continue right to the end of the survey (8 questions)*





# AI IN MY LIFE #DiscussAI

A World  
Leading SFI  
Research  
Centre



*Want to find out more about AI?*  
Sign up for more AI in My Life modules at:  
[www.adaptcentre.ie/ai-in-my-life/  
education@adaptcentre.ie](http://www.adaptcentre.ie/ai-in-my-life/education@adaptcentre.ie)

*Thanks to our partners:*



This work is licensed under a [Creative Commons Attribution-NonCommercial-ShareAlike 4.0 International License](https://creativecommons.org/licenses/by-nc-sa/4.0/)

